



# OKLAHOMA DEPARTMENT OF TRANSPORTATION

Chris Wallace, P.E.

2800 S. 32<sup>nd</sup> Street - Muskogee, OK 74401

Division One Engineer

Phone: 918-687-5407

---

To: Co. Commissioner Doke, Co. Commissioner Payne, Co. Commissioner Wright, Mayor Coburn, City Manager Mike Miller

Subject: Cross Street Recommendations for the Offset Alignment and Possible Interchange Locations

Thank you all for your time and effort in helping put together this first look at cross street treatments and possible interchange locations for the offset alignment. Below I have summarized the comments from our meetings and also included a marked up map of what the interchanges could look like. I will send these comments to our designers to start working on drawings in preparation for public comment at our meeting next year and will let you know as work on this progresses.

Starting from the South end:

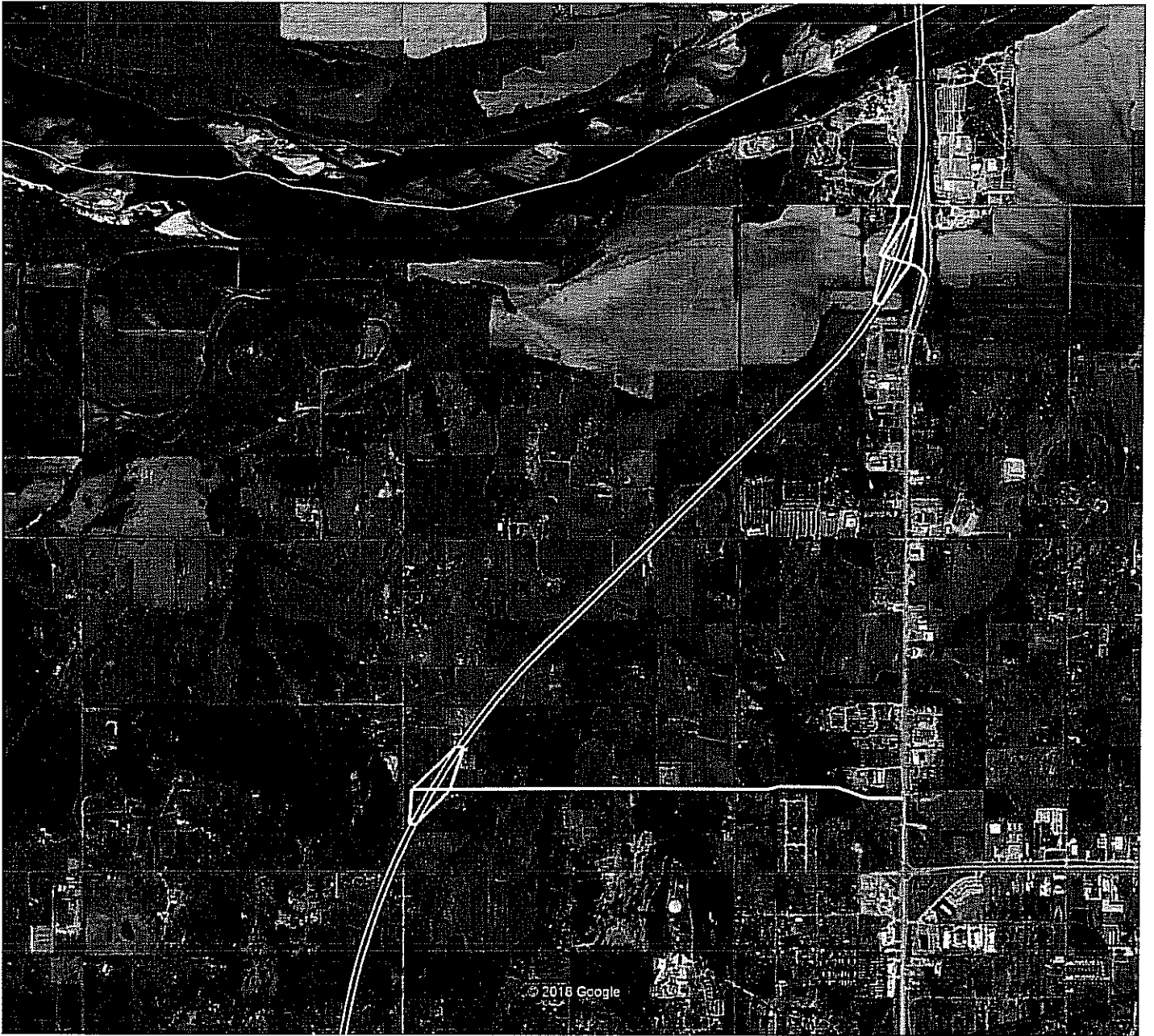
1. Create an interchange at the intersection of the new alignment and E0920 Road, Reroute the existing alignment from the interchange east to the current alignment creating a four way intersection. Remove current west bound US-69 from that interchange west, and reconfigure Oktaha Road parallel to the railroad to the south side of the intersection.
2. W33rd St / Sally Brown Road / Peak Boulevard. Create an interchange with the new alignment and extend US-65 / SH-165 to the interchange
3. West 23st South. The highway will need to bridge over this road due to heavy truck traffic
4. Border / E0880 Road. Add an interchange at the intersection with the new alignment and reconnect border by removing the jog from the east side. Reroute south 54<sup>th</sup> st to the west side of the interchange
5. Estelle, Tennyson, Pine: No treatment necessary, there is access on both sides
6. US-62 / Okmulgee. Compact Diamond Interchange
7. Rolling Oaks Drive. Bridge over Highway
8. Shawnee St. Bridge over highway,

9. 54<sup>th</sup> St. Reconnect N on new alignment to the west onto Shawnee st.
10. Palm Ave, Possible interchange location, we would connect to 54<sup>th</sup> St on the west and palm on the east. Possibly look to connect directly east to current US-69.
11. 26<sup>th</sup> St. Depending on Right-of-Way requirements look at reconnect to Palm Ave. or Fern Mountain.
12. Fern Mountain Bridge Over if there is an Interchange at Palm Ave, if not consider bridge
13. 40<sup>th</sup> St. Connect to Norther Interchange

If you have any questions or comments please let me know.

Chris Wallace, P.E.  
Division 1 Engineer

Cc: Senior Staff  
Commissioner Fidler  
Div. 1 Staff





© 2013 Google



# US 69 Realignment @ Muskogee, Muskogee County, Oklahoma

## PROJECT SCHEDULE AND MILESTONES

ACTIVITY	2017	2022	2023	2024	2025	2026	2027	2028
ROW Acquisition/Utilities								
Construct South Leg								
Construct North Leg								
Realignment Opens								